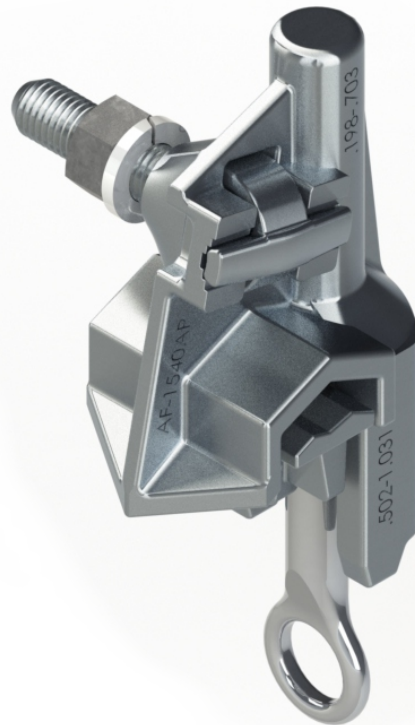




ALUMA-FORM®

Hot Line Clamps





ALUMA-FORM®

Hot Line Clamps

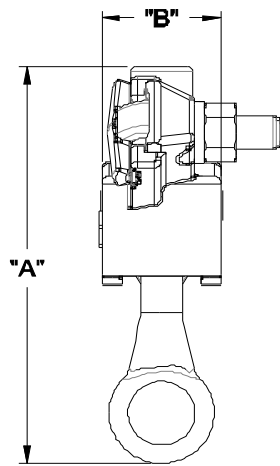
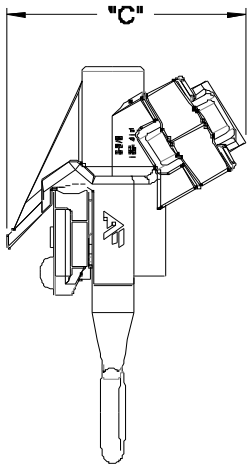
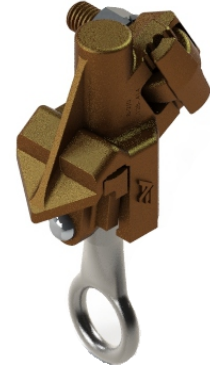
Line tools compatible for distribution tap connections

Key Features

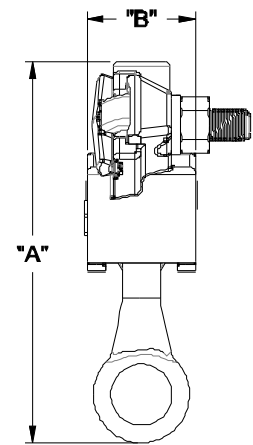
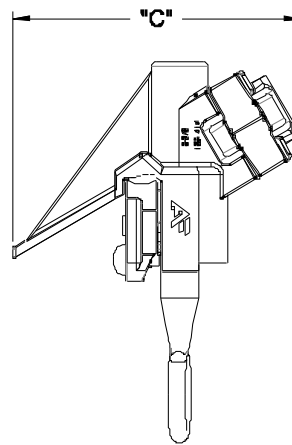
- Tested per ANSI C119.4
- Extended jaw for greater conductor contact.
- Castings offer high strength, and corrosion resistance.

Key Materials

- Body and Keeper: Bronze Alloy
- Eye-bolt: Bronze Alloy
- Eye-stem: Stainless Steel



STANDARD



"LD" STYLE

Catalog Name	Description	Conductor Range		Dimensions Information			Box QTY
		Main	Tap	A	B	C	
AF-BC20	Bronze Hot Line Clamp #8-2/0	#8 Solid - 2/0 Stranded .125" - .414"	#8 Solid - 2/0 Stranded .125" - .414"	4-5/16"	1-1/4"	2-1/2"	25
AF-BC20-XB	Bronze Hot Line Clamp #8-2/0 - Oxide Inhibitor	#8 Solid - 2/0 Stranded .125" - .414"	#8 Solid - 2/0 Stranded .125" - .414"	4-5/16"	1-1/4"	2-1/2"	25
AF-BC20LD	Bronze Hot Line Clamp #8-2/0 - Long Duck Bill	#8 Solid - 2/0 Stranded .125" - .414"	#8 Solid - 2/0 Stranded .125" - .414"	4-5/16"	1-1/4"	3-5/16"	25
AF-BC20-TP	Bronze Hot Line Clamp #8-2/0 - Tin Plated	#8 Solid - 2/0 Stranded .125" - .414"	#8 Solid - 2/0 Stranded .125" - .414"	4-5/16"	1-1/4"	2-1/2"	25
AF-1530	Bronze Hot Line Clamp #6-400MCM	#6 Solid - 4/0 Stranded .162" - .547"	#6 Solid - 4/0 Stranded .162" - .547"	7-1/4"	1-1/4"	2-13/16"	25
AF-1530TP	Bronze Hot Line Clamp #6-400MCM - Tin Plated	#6 Solid - 4/0 Stranded .162" - .547"	#6 Solid - 4/0 Stranded .162" - .547"	7-1/4"	1-1/4"	2-13/16"	25
AF-1540	Bronze Hot Line Clamp 4/0-800	#4/0 - 800 MCM .502" - 1.031"	#4 - 350	6-5/8"	4-7/8"	2-13/16"	25
AF-1540TP	Bronze Hot Line Clamp 4/0-800 - Tin Plated	#4/0 - 800 MCM .502" - 1.031"	#4 - 350	6-5/8"	4-7/8"	2-13/16"	25



ALUMA-FORM®

Hot Line Clamps

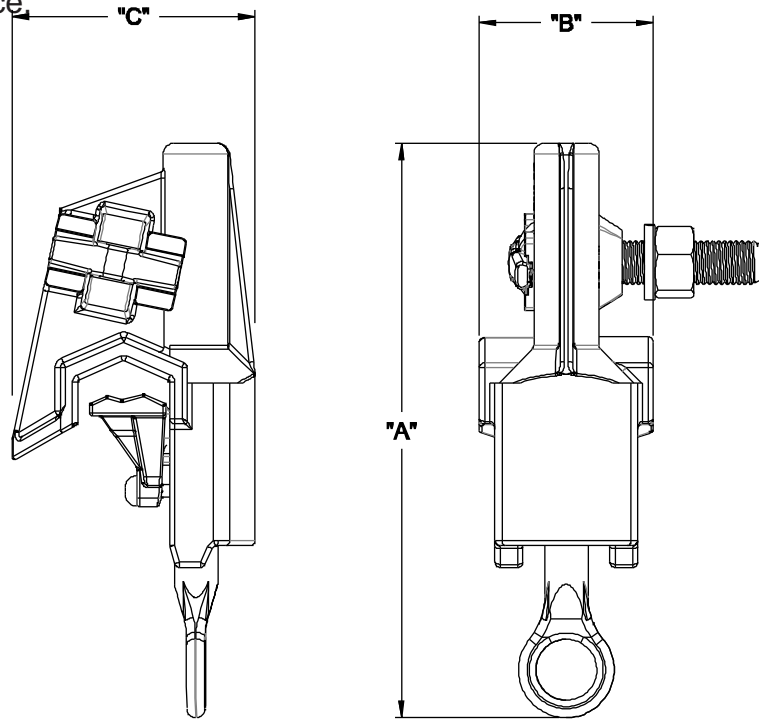
Line tools compatible for distribution tap connections

Key Features

- Tested per ANSI C119.4
- Extended jaw for greater conductor contact.
- Castings offer high strength, and corrosion resistance.

Key Materials

- Body and Keeper: Tin Plated Aluminum Alloy
- Eye-bolt: Tin Plated Bronze Alloy
- Eye-stem: Stainless Steel



Catalog Name	Description	Conductor Range		Dimensions Information			Box QTY
		Main	Tap	A	B	C	
AF-1520AGP	Aluminum Hot Line Clamp #8-2/0	#8 Solid - 2/0 Stranded .125" - .414"	#8 Solid - 2/0 Stranded .125" - .414"	4-5/16"	1-1/4"	2-1/2"	25
AF-1520AGP-XB	Aluminum Hot Line Clamp #8-2/0 - Oxide Inhibitor	#8 Solid - 2/0 Stranded .125" - .414"	#8 Solid - 2/0 Stranded .125" - .414"	4-5/16"	1-1/4"	2-1/2"	25
AF-1530AGP	Aluminum Hot Line Clamp #6-400MCM	#6 Solid - 397.5 .162" - .745"	#6 Solid - 3/0 Stranded .162" - .547"	6-3/16"	1-3/4"	2-1/2"	25
AF-1530AGP-XB	Aluminum Hot Line Clamp #6-400MCM - Oxide Inhibitor	#6 Solid - 397.5 .162" - .745"	#6 Solid - 3/0 Stranded .162" - .547"	6-3/16"	1-3/4"	2-1/2"	25
AF-1534AGP	Aluminum Hot Line Clamp #6-400MCM - Heavy Hex Nut	#6 Solid - 397.5 .162" - .745"	#6 Solid - 3/0 Stranded .162" - .547"	6-3/16"	1-3/4"	2-1/2"	25
AF-1534AGP-XB	Aluminum Hot Line Clamp #6-400MCM - Heavy Hex Nut and Oxide Inhibitor	#6 Solid - 397.5 .162" - .745"	#6 Solid - 3/0 Stranded .162" - .547"	6-3/16"	1-3/4"	2-1/2"	25
AF-1540AGP	Aluminum Hot Line Clamp 4/0-800	#4/0 - 800 MCM .502" - 1.031"	#8 Solid - 2/0 Stranded .198" - .703"	6-5/8"	2"	2-13/16"	25
AF-1540AGP-XB	Aluminum Hot Line Clamp 4/0-800 - Oxide Inhibitor	#4/0 - 800 MCM .502" - 1.031"	#8 Solid - 2/0 Stranded .198" - .703"	6-5/8"	2"	2-13/16"	25



ALUMA-FORM®

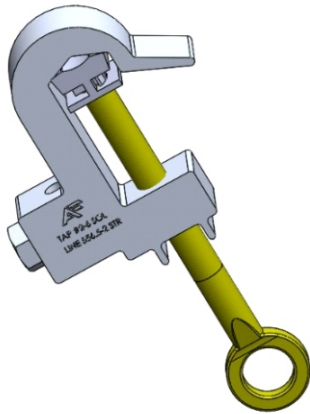
Hot Line Clamps

Key Features

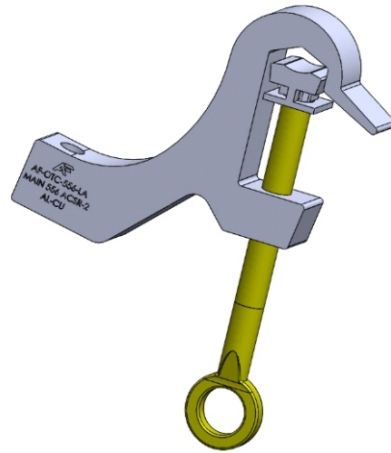
- 6061-T6 Aluminum Alloy
- Meets or Exceeds ANSI 119.4 Class A Specifications
- Rated for 600 Volts
- Range Taking for Reduced Inventory Needs
- Made in the USA



AF-LAC-556-2



AF-OTC-556-LA



Extruded Aluminum

Catalog #	Description	Run (Main)	Tap
AF-LAC-556-2	AL HOT LINE CLAMP #2-556	#2 - 556	#6 - #2
AF-LAC-556-2P	AL HOT LINE CLAMP #2-556 - OXIDE INHBTR	#2 - 556	#6 - #2

Extruded Aluminum For Line Arrester

Catalog #	Description	Run (Main)	Tap
AF-OTC-556-LA	AL HOT LINE CLAMP #2-556	#2 - 556	#6 - #2
AF-OTC-556-LAP	AL HOT LINE CLAMP #2-556 - OXIDE INHBTR	#2 - 556	#6 - #2