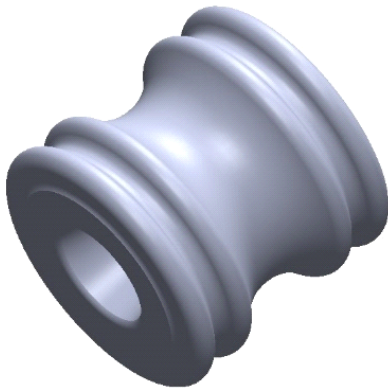
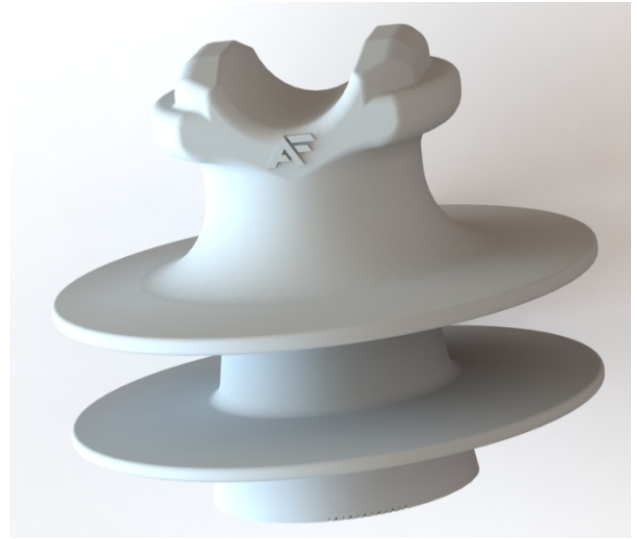




ALUMA-FORM®

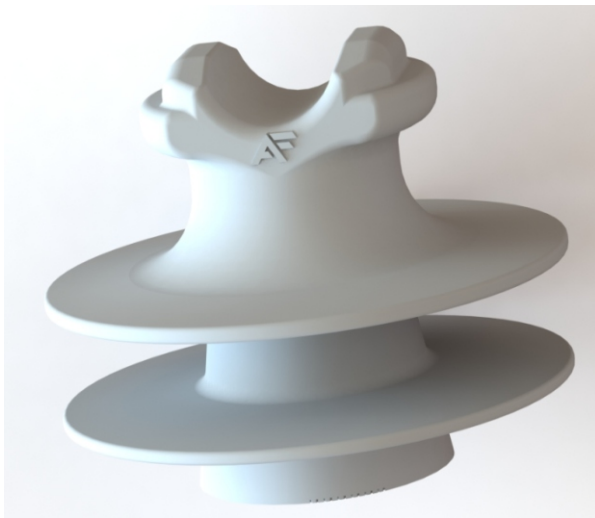
HDPE Insulator Catalog





ALUMA-FORM®

Pin & Clamp Top Insulator



<u>INS</u>	<u>15</u>	<u>P</u>	<u>C</u>	<u>1</u>	
Insulator	Typical Application, kV	Insulator Type	Insulator Neck	Thread Size	Options
	15 = 15kV	P = Pin	C = C Neck	1 = 1"	P = Peek Inserts (clamp top only)
	25 = 25kV		F = F Neck	2 = 1-3/8"	Blank = Ceramic Inserts (clamp top only)
	35 = 35kV		J = J Neck		
			K = Clamp Top		





ALUMA-FORM[®]

Pin Top Insulators

Features

Meets or Exceeds ANSI and RUS Test Standards

ANSI C29.5, C29.6, C29.13

High Density Polyethylene

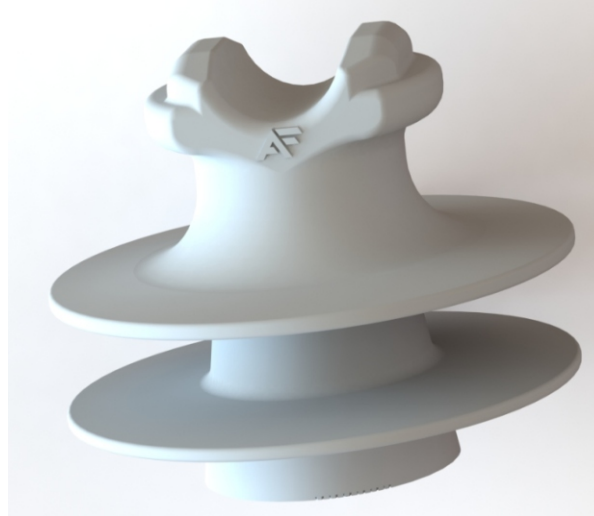
UV and Ozone Resistant

High Heat Resistant

Impact Resistant

1" and 1-3/8" Threads

100% X-Ray to Insure No Voids



Markings

AF Logo

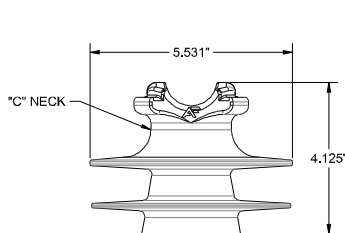
Date Code

ANSI Class

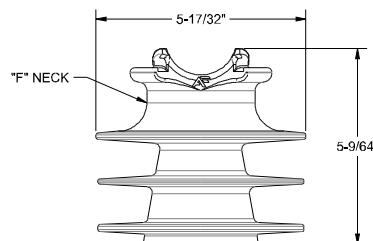
Part Number

CAT #	ANSI CLASS	TYPICAL APPLICATION (kV)	PINHOLE DIA METER (IN)	LEAKAGE DISTANCE in. (ANSI)	CANTILEVER STRENGTH lbs (ANSI)	60 Hz DRY FLASHOVER kV (ANSI)	60 Hz WET FLASHOVER kV (ANSI)	IMPULSE FLASHOVER POS. kV (ANSI)	IMPULSE FLASHOVER NEG. kV (ANSI)	LOW FREQUENCY PUNCTURE kV (ANSI)
INS-15-PC-1	55-3	15	1	10.1 (7)	>3500 (2500)	70 (55)	45 (30)	130 (90)	125 (90)	210 (90)
INS-15-PF-1	55-4	15	1	14.1 (9)	>3500 (3000)	80 (65)	53 (35)	140 (105)	160 (130)	180 (95)
INS-25-PF-1	55-5	25	1	14.3 (12)	>3500 (3000)	82 (80)	55 (45)	140 (130)	160 (150)	189 (115)
INS-25-PJ-1	55-6	25	1	15.7 (15)	>3500 (3000)	100 (100)	70 (50)	155 (150)	190 (170)	200 (135)
INS-25-PJ-2	56-1	25	1-3/8	15.7 (13)	>3500 (3000)	100 (95)	70 (60)	155 (150)	190 (190)	200 (130)
INS-35-PF-1	55-6*	35	1	22.3 (15)	>3500 (3000)	100 (95)	70 (60)	155 (150)	190 (190)	200 (130)
INS-35-PF-2	55-7*	35	1-3/8	22.3 (15)	>3500 (2500)	100 (95)	70 (60)	155 (150)	190 (190)	200 (130)
INS-35-PJ-1	55-6	35	1	22.5 (15)	>3500 (2500)	121 (100)	72 (50)	205 (150)	225 (170)	210 (135)
INS-35-PJ-2	55-7	35	1-3/8	22.5 (15)	>3500 (2500)	121 (100)	72 (50)	205 (150)	225 (170)	210 (135)

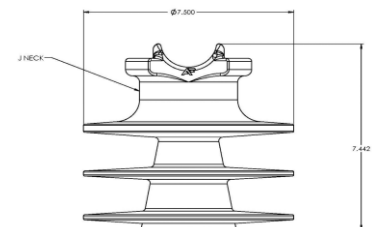
* Meets Electrical Performance - Has F Neck instead of J Neck



INS-15-PC-1
ANSI 55-3
1" PIN



INS-25-PF-1
ANSI 55-5
1" PIN



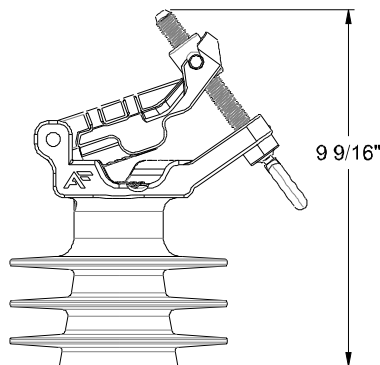
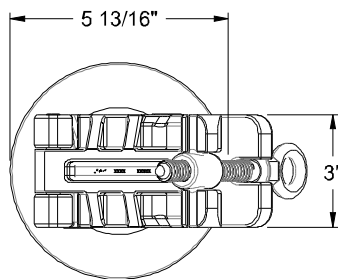
INS-35-PJ-2
ANSI 55-6
1-3/8" PIN



ALUMA-FORM®

Clamp Top Insulators

- Patented design
- Single bolt design reduces installation time and cost
- Easier installation with no bolt removal to load conductor
- No stringing tool required as conductor installs same as tie-top
- Compound angle for direct bolt access below arm
- Fulcrum clamp for highest clamping force in the industry
- GO-95 compliant
- Heat dissipating design in over-load scenarios
- Up to 30 deg. turning angle in either direction with standard pin
- Meets all ANSI requirements
- RUS approved
- Ozone and UV resistant High Density Polyethylene construction
- 100% X-ray to ensure no voids
- All insulators permanently marked AF logo, Date Code, and ANSI Class
- 1" pin threads
- Impact resistant



15 kV shown above



ALUMA-FORM®

Clamp Top Insulators



The Clamp Top Pin Insulator utilizes a compound angle clamp for direct access below the arm, making it easy to install with a hotstick.

The clamping mechanism creates a fulcrum effect on the cable for up to 3:1 ratio of tightening force vs clamping force.

Clamp Top Pin Insulators are offered with two different inserts.

PEEK – Limits the cable retention force up to 450 lbs to comply with GO-95 requirements.

Ceramic – Delivers up to 1000 lbs. cable retention.

Each insert is approved for use with all types of cable including aluminum, copper, bare, and insulated.

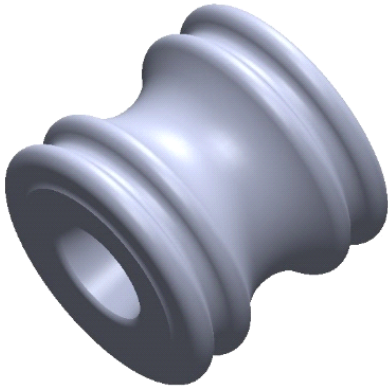


CAT #	ANSI CLASS	TYPICAL APPLICATION (kV)	PINHOLE DIAMETER (IN)	LEAKAGE DISTANCE in. (ANSI)	CANTILEVER STRENGTH LBS (ANSI)	60 Hz DRY FLASHOVER kV (ANSI)	60 Hz WET FLASHOVER kV (ANSI)	IMPULSE FLASHOVER POS. kV (ANSI)	IMPULSE FLASHOVER NEG. Kv (ANSI)	LOW FREQUENCY PUNCTURE kV (ANSI)
INS-15-PK-1	55-3 / 55-4	15	1	16.3 (9)	>3500 (2500)	80 (65)	53 (35)	140 (105)	160 (130)	180 (95)
INS-15-PK-1-P	55-3 / 55-4	15	1	16.3 (9)	>3500 (3000)	80 (65)	53 (35)	140 (105)	160 (130)	180 (95)
INS-15-PKW-1	55-3 / 55-4	25	1	16.3 (9)	>3500 (3000)	80 (65)	53 (35)	140 (105)	160 (130)	180 (95)
INS-15-PKW-1-P	55-3 / 55-4	25	1	16.3 (9)	>3500 (3000)	80 (65)	53 (35)	140 (105)	160 (130)	180 (95)
INS-25-PK-1	55-5	25	1	16.5 (12)	>3500 (3000)	82 (80)	55 (45)	142 (130)	162 (150)	189 (115)
INS-25-PK-1-P	55-5	25	1	16.5 (12)	>3500 (3000)	82 (80)	55 (45)	142 (130)	162 (150)	189 (115)
INS-25-PK-2	55-5	25	1-3/8	16.5 (12)	>3500 (3000)	82 (80)	55 (45)	142 (130)	162 (150)	189 (115)
INS-25-PK-2-P	55-5	25	1-3/8	16.5 (12)	>3500 (3000)	82 (80)	55 (45)	142 (130)	162 (150)	189 (115)
INS-35-PK-1	55-6	35	1	22.0 (15)	>3500 (3000)	121 (100)	72 (50)	205 (150)	225 (170)	210 (135)
INS-35-PK-1-P	55-6	35	1	22.0 (15)	>3500 (3000)	121 (100)	72 (50)	205 (150)	225 (170)	210 (135)
INS-35-PK-2	55-7	35	1-3/8	22.0 (15)	>3500 (3000)	121 (100)	72 (50)	205 (150)	225 (170)	210 (135)
INS-35-PK-2-P	55-7	35	1-3/8	22.0 (15)	>3500 (3000)	121 (100)	72 (50)	205 (150)	225 (170)	210 (135)

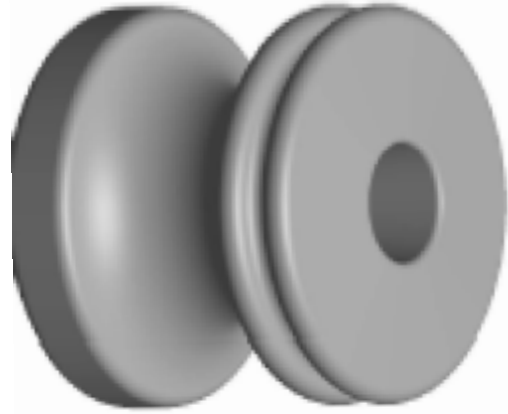


ALUMA-FORM®

Spool Insulators



INS-53-1



INS-53-2

Catalog Number	ANSI Class	Material Description
INS-53-1	53-1	SPOOL INSULATOR 2-1/4"
INS-53-2	53-2	SPOOL INSULATOR 3"

- Meets ANSI C29.3 Class 53-2
- High Density Polymer – UV and Flame Resistant
- Fits on 5/8" Bolt

