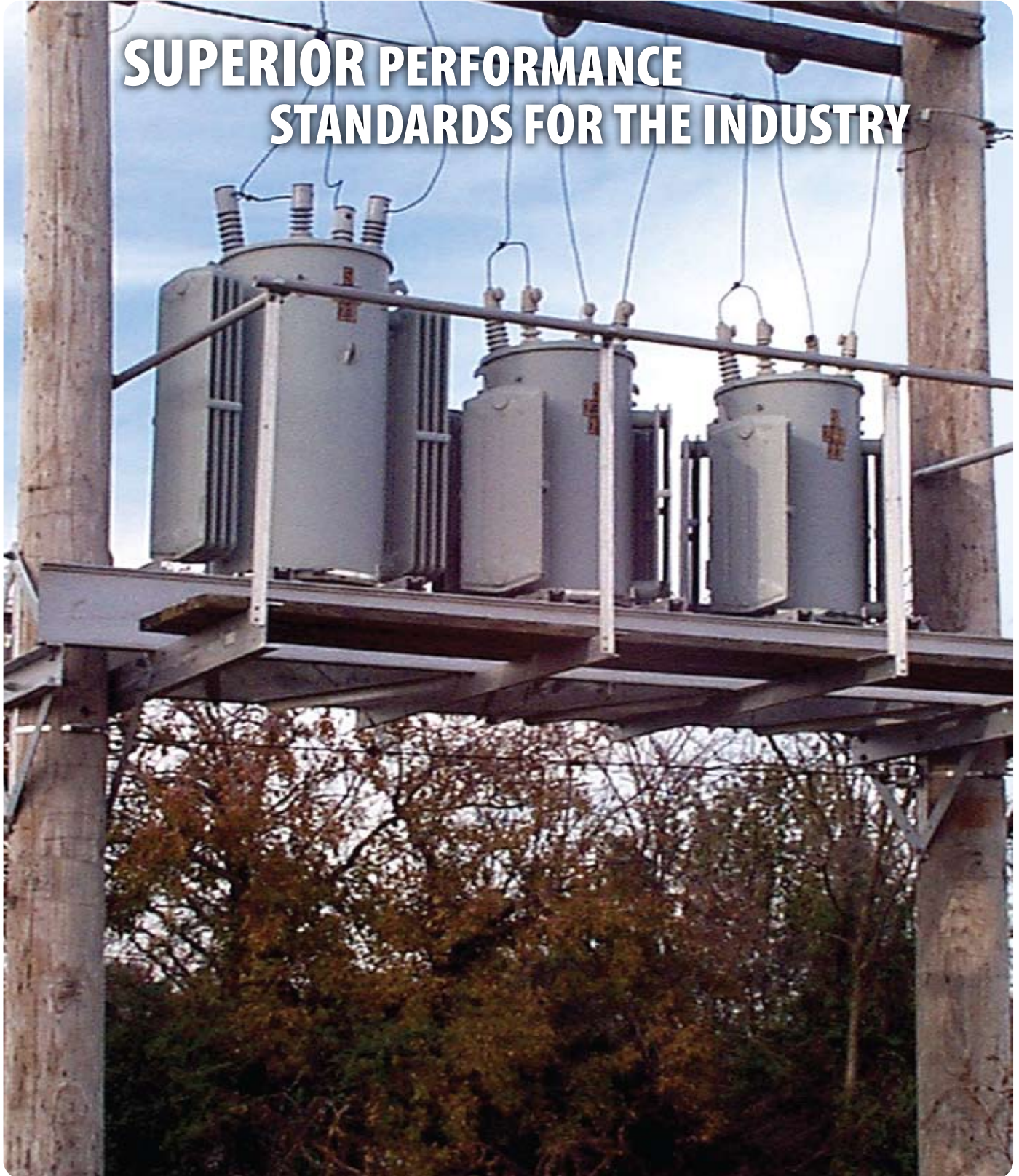




ALUMA-FORM®

PLATFORMS

**SUPERIOR PERFORMANCE
STANDARDS FOR THE INDUSTRY**





ALUMA-FORM®

PLATFORMS

Your best solution for supporting transformers, regulators and other heavy equipment!

Aluma-Form® established the platform performance standards for the industry! They are superior in every category, including cost savings. Savings begin with the initial purchase and installation and carry over in terms of maintenance and replacement savings year after year!

The Aluma-Form® Advantage

Easy and Safe to Install

Lightweight, easy to handle extrusions permit assembly on the ground - without expensive equipment. Only minutes are required to assemble most models. The completed platform can be hoisted into position using ropes and pulleys. Lightweight design results in less physical strain to workmen. It's easy and safe!

Instantly Adjustable

Cross members of Aluma-Form® platforms can be adjusted to equipment size and location while on the ground or in the air. Slotted I-beams permit platforms to be completed on the ground and lifted into position as a complete unit.

Strength and Beauty

High strength 6061-T6 aluminum alloy is used to obtain a high strength to weight ratio. This permits easier handling without sacrificing strength. The clean, uncluttered appearance of Aluma-Form® platforms provides structures that are aesthetically pleasing.

Maintenance Free

Aluma-Form® platforms provide a lifetime use without expensive repairs. The 6061-T6 aluminum alloy also provides corrosion resistance in chemical and coastal environments.

Flexibility of Design

Aluma-Form® platforms are available in over 60 standard models to fit a wide range of applications. Need your platform custom designed? No problem – just contact us or your local representative.

Speed!

With the best lead-times in the industry, Aluma-Form® can deliver your platform when you need it!





ALUMA-FORM®

PLATFORMS

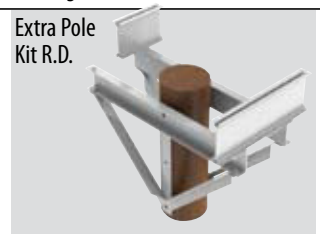
Short Regular Duty Platforms

Platform Only Catalog Number	Nominal Span
S2PAL-2-6	6 feet
S2PAL-4-6	6 feet
S2PAL-2-8	8 feet
S2PAL-4-8	8 feet



Regular Duty Platforms

Platform Only Catalog Number	Platform with (1) Walkway* Catalog Number	Platform with (2) Walkways* Catalog Number	Nominal Span	Extra Pole Kit Catalog #
2PAL-12	2PCAL-12	2P2CAL-12	12 feet	Extra Pole Kit R.D.
2PAL-14	2PCAL-14	2P2CAL-14	14 feet	
2PAL-16	2PCAL-16	2P2CAL-16	16 feet	

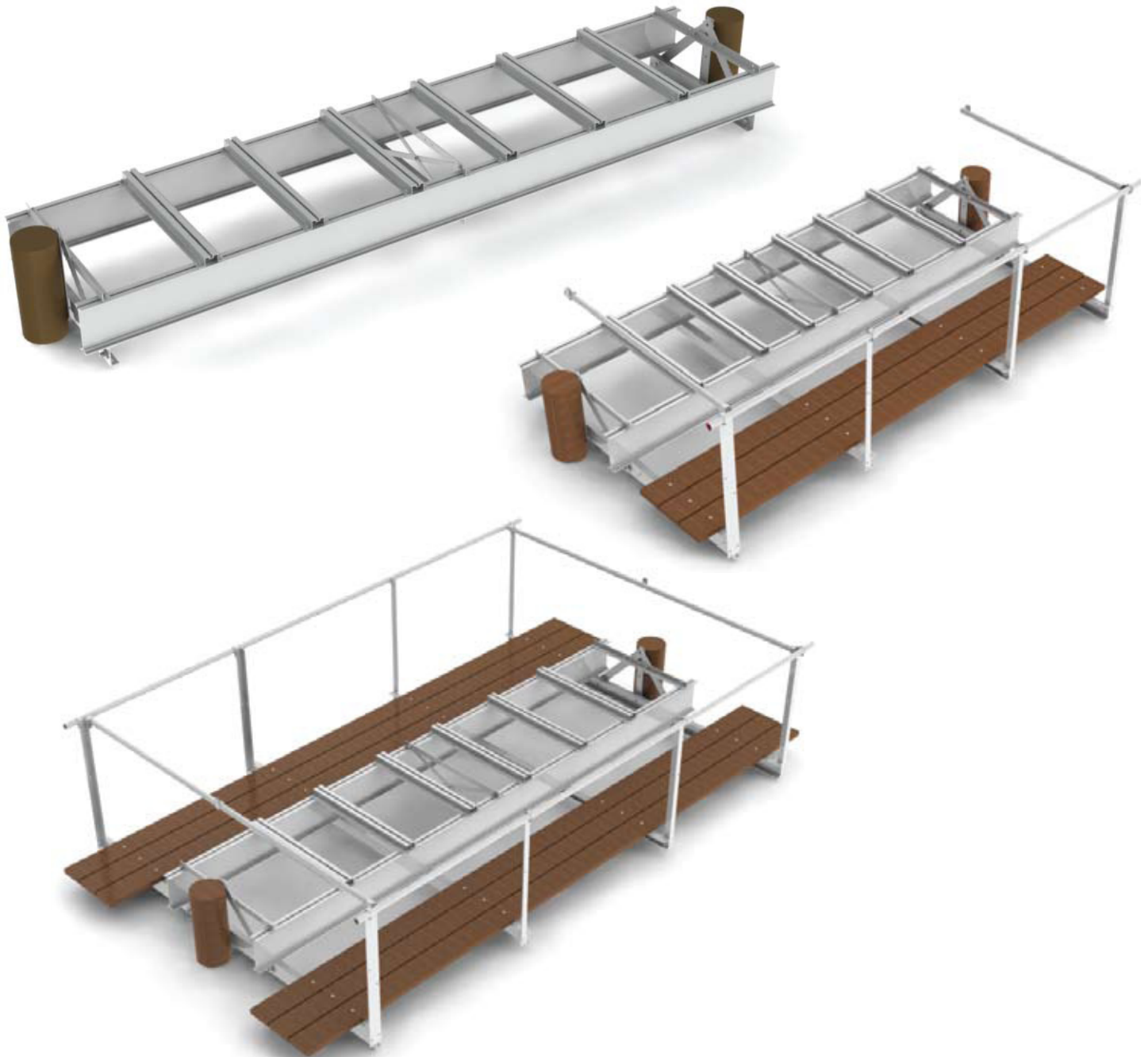


Regular Duty Platforms for 3 poles


Platform Only Catalog Number	Platform with (1) Walkway* Catalog Number	Platform with (2) Walkways* Catalog Number	Nominal Span
3PAL-12	3PCAL-12	3P2CAL-12	12 feet
3PAL-14	3PCAL-14	3P2CAL-14	14 feet
3PAL-16	3PCAL-16	3P2CAL-16	16 feet

*Note: Platforms with walkways do not include wood planks. Wood planks optional, but can be ordered separately. See Accessories section.

PLATFORMS

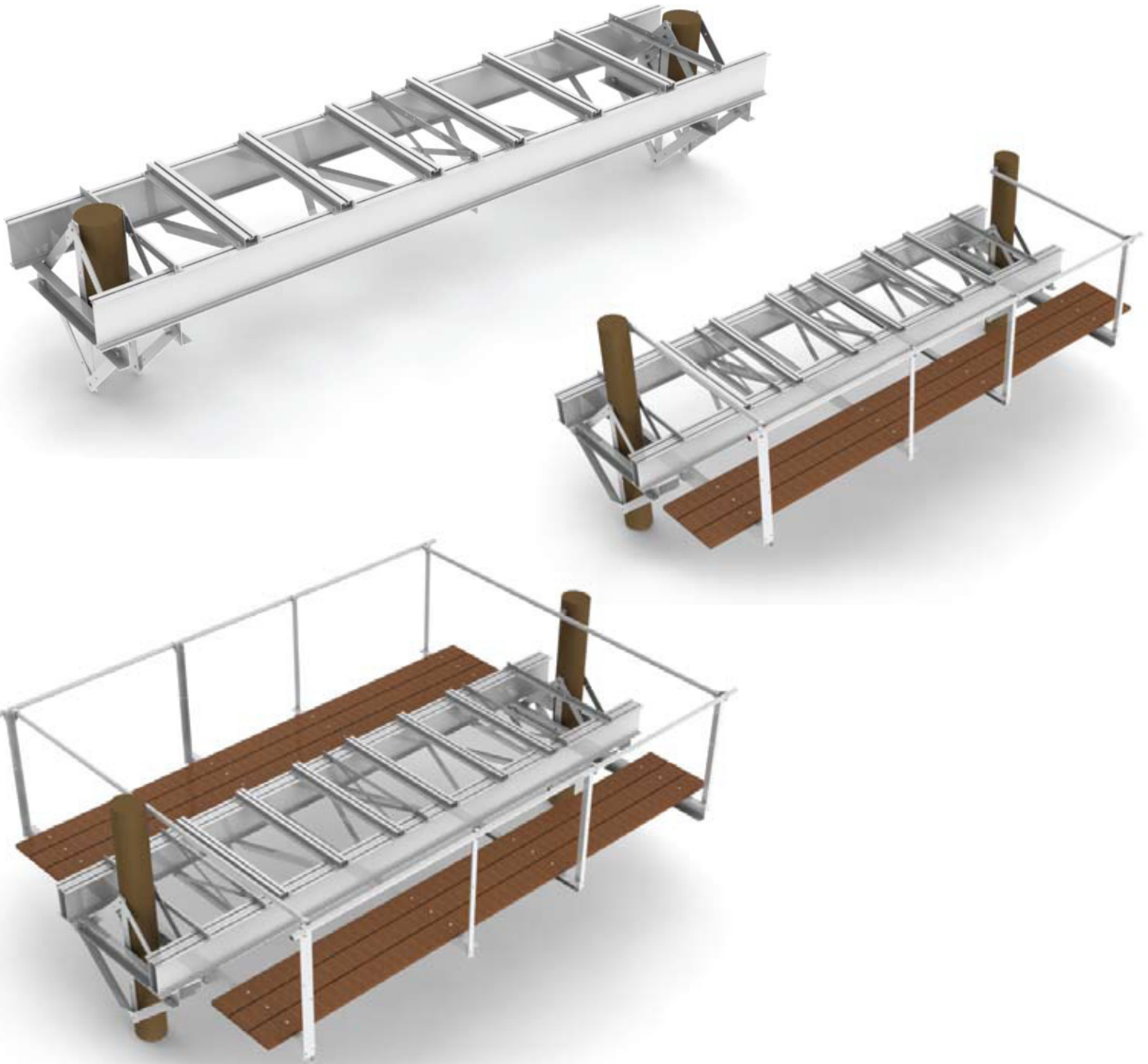


Heavy Duty Platforms


Platform Only Catalog Number	Platform with (1) Walkway* Catalog Number	Platform with (2) Walkways* Catalog Number	Nominal Span	Extra Pole Kit Catalog #
HD2PAL-8	HD2PCAL-8	HD2P2CAL-8	8 feet	Extra Pole Kit H.D. & E.H.D. 
HD2PAL-10	HD2PCAL-10	HD2P2CAL-10	10 feet	
HD2PAL-12	HD2PCAL-12	HD2P2CAL-12	12 feet	
HD2PAL-14	HD2PCAL-14	HD2P2CAL-14	14 feet	
HD2PAL-16	HD2PCAL-16	HD2P2CAL-16	16 feet	
HD2PAL-18	HD2PCAL-18	HD2P2CAL-18	18 feet	
HD2PAL-20	HD2PCAL-20	HD2P2CAL-20	20 feet	
HD2PAL-22	HD2PCAL-22	HD2P2CAL-22	22 feet	

*Note: Platforms with walkways do not include wood planks. Wood planks optional, but can be ordered separately. See Accessories section.

PLATFORMS

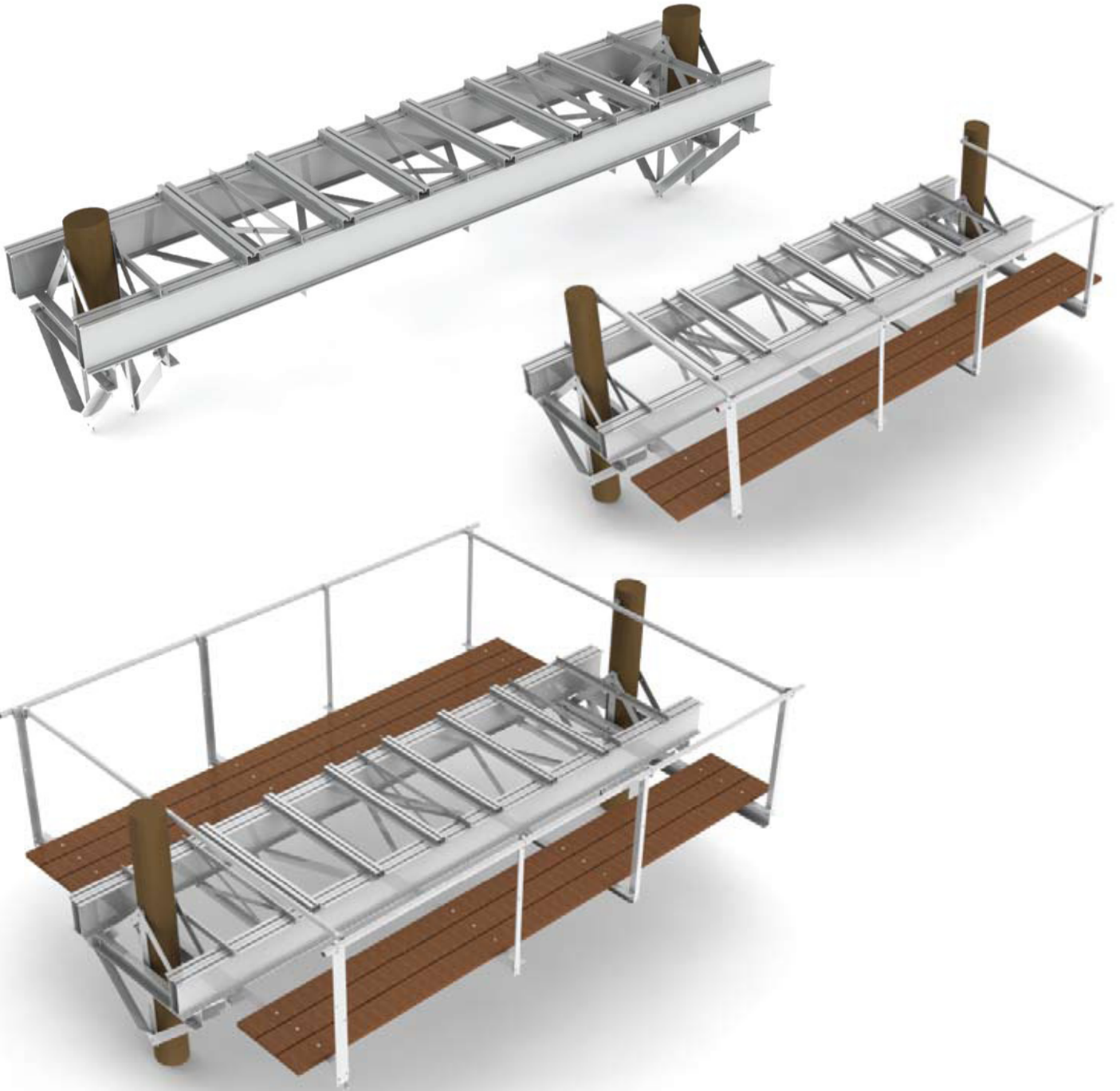


Extra Heavy Duty Platforms

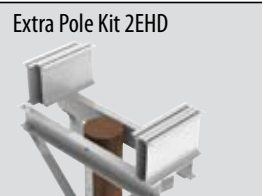
Platform Only	Platform with (1) Walkway*	Platform with (2) Walkways*	Nominal Span	Extra Pole Kit
Catalog Number	Catalog Number	Catalog Number		Catalog #
EHD2PAL-12	EHD2PCAL-12	EHD2P2CAL-12	12 feet	Extra Pole Kit H.D. & E.H.D. 
EHD2PAL-14	EHD2PCAL-14	EHD2P2CAL-14	14 feet	
EHD2PAL-16	EHD2PCAL-16	EHD2P2CAL-16	16 feet	
EHD2PAL-18	EHD2PCAL-18	EHD2P2CAL-18	18 feet	
EHD2PAL-20	EHD2PCAL-20	EHD2P2CAL-20	20 feet	
EHD2PAL-22	EHD2PCAL-22	EHD2P2CAL-22	22 feet	

*Note: Platforms with walkways do not include wood planks. Wood planks optional, but can be ordered separately. See Accessories section.

PLATFORMS



Double Extra Heavy Duty Platforms

Platform Only Catalog Number	Platform with (1) Walkway* Catalog Number	Platform with (2) Walkways* Catalog Number	Nominal Span	Extra Pole Kit Catalog #
2EHD2PAL-14	2EHD2PCAL-14	2EHD2P2CAL-14	14 feet	 Extra Pole Kit 2EHD
2EHD2PAL-16	2EHD2PCAL-16	2EHD2P2CAL-16	16 feet	
2EHD2PAL-18	2EHD2PCAL-18	2EHD2P2CAL-18	18 feet	
2EHD2PAL-20	2EHD2PCAL-20	2EHD2P2CAL-20	20 feet	
2EHD2PAL-22	2EHD2PCAL-22	2EHD2P2CAL-22	22 feet	
2EHD2PAL-24	2EHD2PCAL-24	2EHD2P2CAL-24	24 feet	
2EHD2PAL-26	2EHD2PCAL-26	2EHD2P2CAL-26	26 feet	

*Note: Platforms with walkways do not include wood planks. Wood planks optional, but can be ordered separately. See Accessories section.



ALUMA-FORM®

PLATFORMS

Accessories

Platform Overhead Switch Mounts

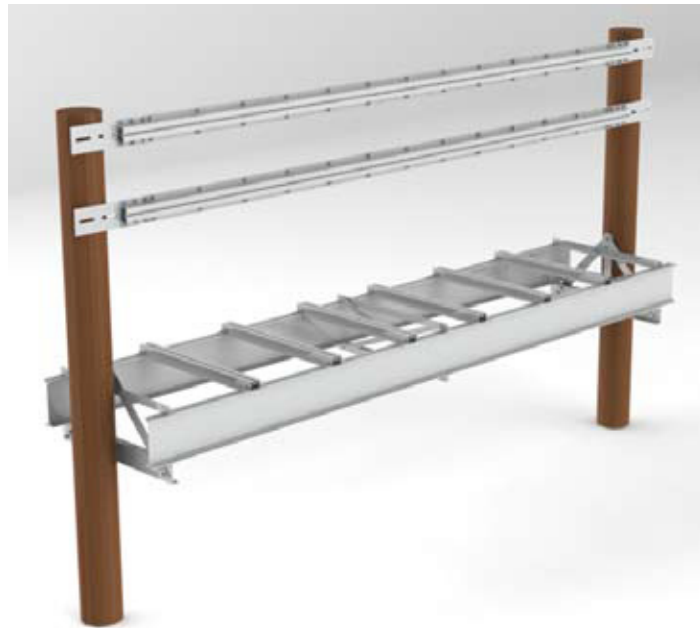
For mounting regulator bypass switches and disconnects above regulators and transformers.

The best alternative to wood timbers.

- Maintenance free, high strength 6061-T6 aluminum alloy
- Easy installation and equipment adjustment. Center slot captures 1/2" hex bolts
- More rigid than wood timbers



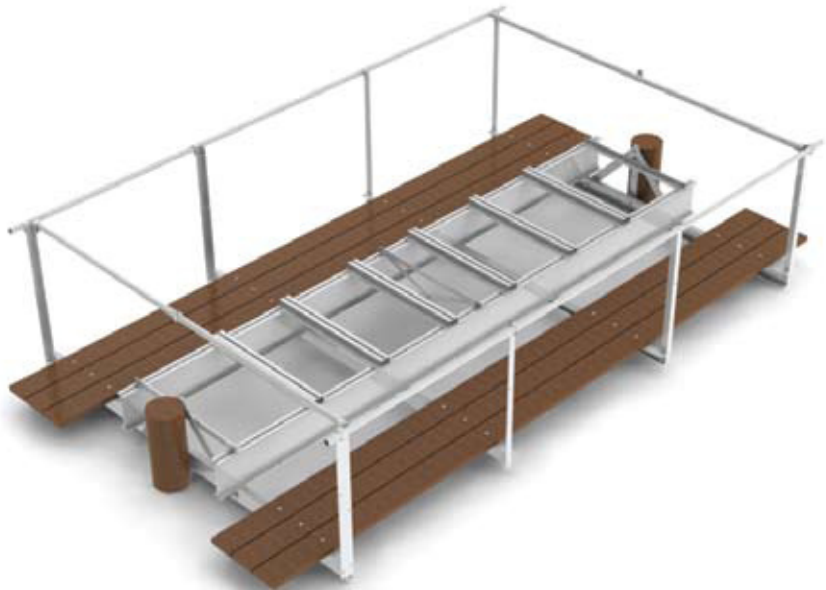
Catalog Number	Nominal Span
2B2-8	8 ft.
2B2-10	10 ft.
2B2-12	12 ft.
2B2-14	14 ft.
2B2-16	16 ft.
2B2-18	18 ft.
2B2-20	20 ft.
2B2-22	22 ft.
2B2-24	24 ft.



Note: Order one or two overhead switch mounts per platform, depending on overhead equipment requirements.

Platform Wood Walkway Planks

Catalog Number	Nominal Span
Timbers 2x8x7'8	8 ft.
Timbers 2x8x9'8	10 ft.
Timbers 2x8x11'8	12 ft.
Timbers 2x8x13'8	14 ft.
Timbers 2x8x15'8	16 ft.
Timbers 2x8x17'8	18 ft.
Timbers 2x8x19'8	20 ft.
Timbers 2x8x21'8	22 ft.



Maximum Recommended Load (lbs.)

Short Regular Duty ALUMA-FORM Platforms (3' 5-1/8" wide)

Model No.*	No. Poles	Concentrated in center of span	Per position for 3 position loading equally spaced	**Per position for 4 position loading equally spaced
S2PAL-2-6	2	5,000		
S2PAL-4-6	2	5,000		
S2PAL-2-8	2	5,000		
S2PAL-4-8	2	5,000		

Regular Duty ALUMA-FORM Platforms (3' 5-1/8" wide)

2PAL-12	2	4,560	1,900	1,500
2PAL-14	2	3,340	1,410	1,105
2PAL-16	2	2,915	1,225	965
3PAL-12	3	5,000	3,333	2,500
3PAL-14	3	5,000	3,333	2,500
3PAL-16	3	5,000	3,333	2,500

Heavy Duty ALUMA-FORM Platforms (3' 5-1/8" wide)

HD2PAL-14	2	6,750	4,500	3,375
HD2PAL-16	2	6,750	4,500	3,375
HD2PAL-18	2	6,750	3,620	2,840

Extra Heavy Duty ALUMA-FORM Platforms (3' 5-1/8" wide)

EHD2PAL-14	2	9,000	6,000	4,500
EHD2PAL-16	2	9,000	4,650	3,650
EHD2PAL-18	2	8,600	3,620	2,840
EHD2PAL-20	2	6,880	2,900	2,275
EHD2PAL-22	2	5,630	2,370	1,860

Double Extra Heavy Duty ALUMA-FORM Platforms (3' 11-3/8" wide)

2EHD2PAL-14	2	18,000	10,000	7,500
2EHD2PAL-16	2	18,000	9,300	7,300
2EHD2PAL-18	2	17,190	7,240	5,680
2EHD2PAL-20	2	13,760	5,790	4,550
2EHD2PAL-22	2	11,260	4,740	3,720

*Model No. feet and inches notation equals distance between pole centers for all platforms listed herein.

**Four position loading requires extra catalog number 2B2S which should be ordered with platform. Double Extra Heavy Duty platforms (2EHD) require extra catalog number 2B2S-2EHD.

Grounding Procedure. All the structural members used in Aluma-Form[®] are suitable as grounding conductors. This means that the structure itself can be used for grounding. We do recommend the use of a No Oxide inhibiting compound after the grounding joint has been cleaned and abraded.

This page contains Aluma-Form's recommended loading data for various platforms. The customer is cautioned, however, that the accompanying data is published only for general information in assisting platform selection and should be used only by skilled persons. Technical skills are required in the use of the information, platform selection, platform loading and installation. Loads shown are within the Aluminum Association's allowable stress design method for 6061-T6. All recommended loadings will produce deflections less than 1/250 of span. Greater loads may be applied in most cases but will result in deflections greater than 1/250 of span. Use of extra pole kits will also permit increased loading. Consult factory for any additional loading data.



ALUMA-FORM[®]

3625 Old Getwell Rd.
 Memphis, TN 38118
 P.O. Box 18555
 Memphis, TN 38181-0555
 Phone 901-362-0100
 Fax 901-794-9515